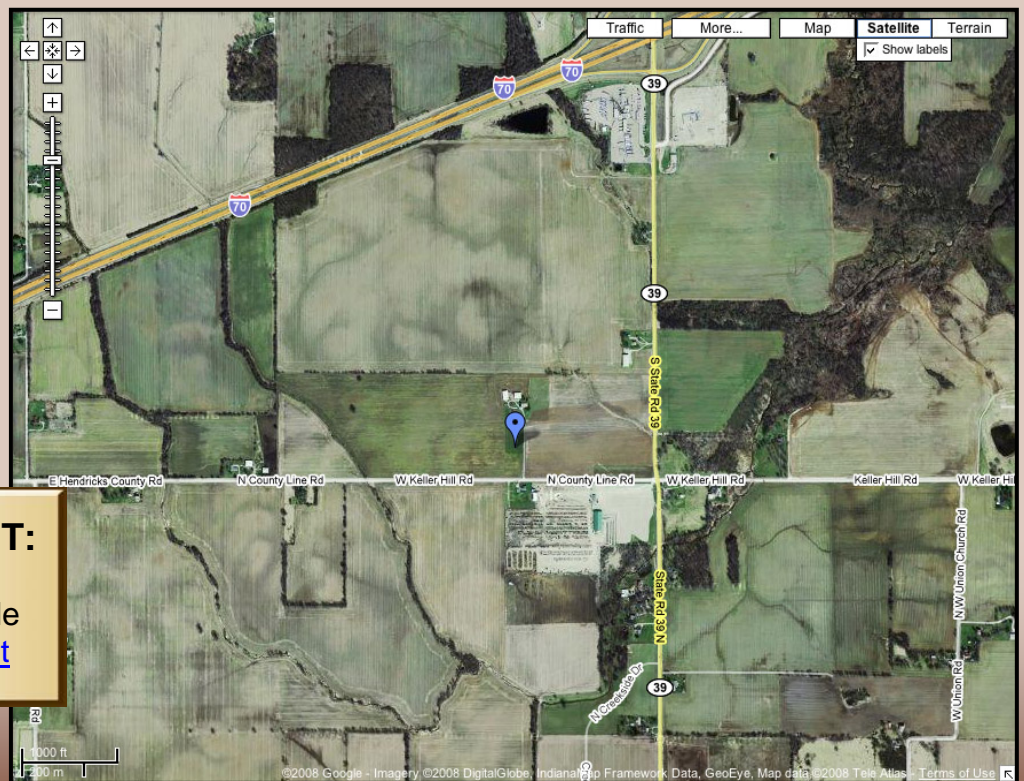
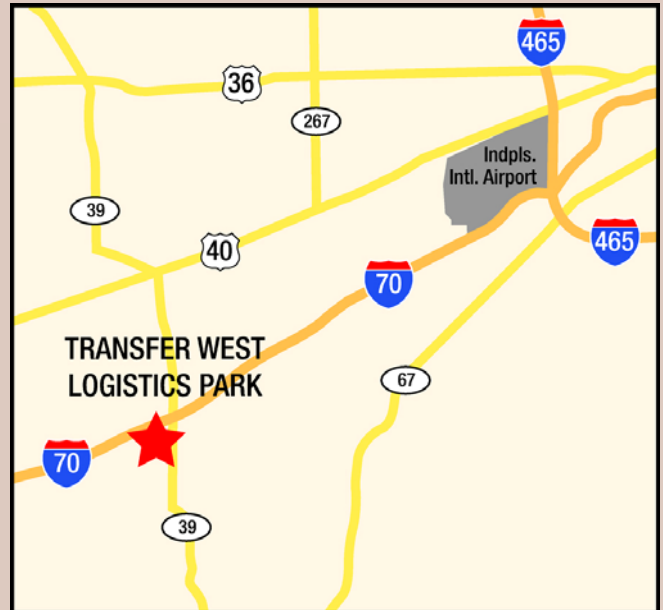




TRANSFER WEST LOGISTICS PARK – Monrovia, IN

Status	For Sale
Address	1996 E. Hendricks Co. Rd. Clayton, IN 46118
Size	100 acres

100 acres of prime industrial ground at next interchange west of Plainfield and Indianapolis International Airport. Great access to I-70 from SR 39, soon to be improved to 5 lanes. This location is part of an emerging warehouse district planned for over 25 million square feet of modern bulk space. Other planned developments in the area include 70 West Commerce Park and Westpoint Business Center. Site will accommodate over 1.6 million square feet of warehouse space.



CONTACT AGENT:
 Thomas L. Baker
 317-407-2350 mobile
abaker@ebaker.net

TRANSFER WEST LOGISTICS PARK – Monrovia, IN



- Easy access to I-70 from SR 39
- 9 miles west of Indianapolis International Airport
- 100 acres for industrial development
- Emerging logistics park district, over 25 million sf planned
- Immediately west of Plainfield

2007 Demographics	1 mile	3 miles	5 miles
Population	109	4,353	9,707
Households	44	1,596	3,563
Avg. HH Income \$	63,906	64,638	66,307
Traffic counts I-70 (46,396 ADT), SR 39 (8,075 ADT)			

